

# The RELEAF London i-Tree Eco Tree and Woodland Survey 2014

**RE:LEAF**   
TREES FOR A GREENER LONDON



**Do you want to be involved in the world's largest urban forest survey?**

**Can you spare five days this Summer?**

**Then register your interest in the London i-tree survey 2014**

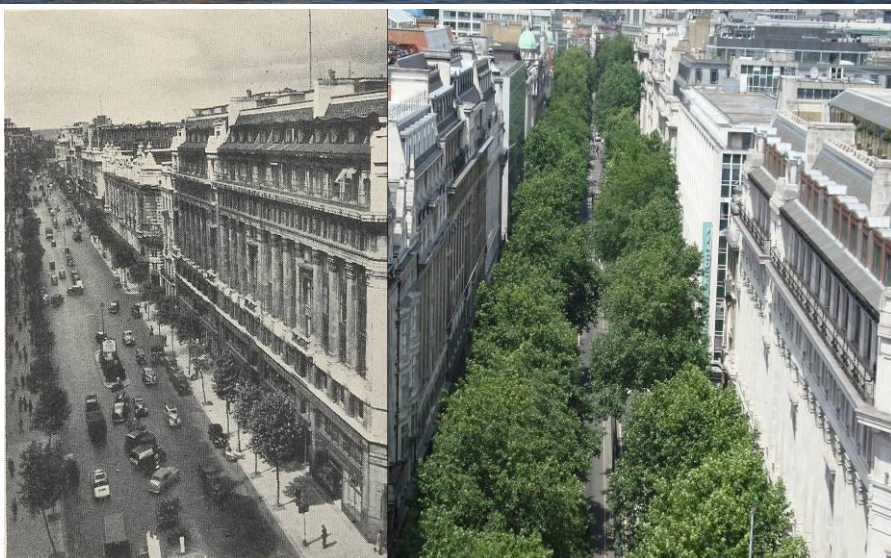
The RELEAF London Partnership is undertaking a survey of London's trees and woodlands, to establish the benefits they provide and put a value on them.

**We need 200 volunteers for one day's training and about four days surveying actually out in the field looking at and measuring trees across Greater London.**

**You will:**

- **Receive training in the use of the US Forest Service's i-tree methodology**
- **Be accredited as an i-Tree Eco London 2014 surveyor**
- **Help protect London's trees and woodlands for future generations**
- **Place a value on the benefits London's trees and woodlands deliver**
- **Get the chance to meet others**

**Get in touch today to find out more!**



The RELEAF London Partnership are:

- The Greater London Authority
- The Tree Council
- The London Tree Officers Association
- Trees for Cities
- Treeconomics
- Forestry Commission England

with support from Natural England.



**For more information and to register as a volunteer contact:**

**Jim Smith at the Forestry Commission's London office at: [jim.c.smith@forestry.gsi.gov.uk](mailto:jim.c.smith@forestry.gsi.gov.uk)**

**You can also join the i-Tree Eco London Project Facebook [here](#) (or see the Twitter [page](#)) to be kept informed about what you'll be doing and when you will be needed.**

